

The Wave



Term 3 – Week 3

Principal's Message

What another big week at Ballina PS!

This week has seen our students taking part in opportunities galore – our Aboriginal Girls Dance Troupe went out to the Preschool to perform; KF came to share about monkey's escaping and eating ice-cream and milkshakes; students received ribbons for their performance in the school athletics carnival; many students went to the zone athletics and we had a wonderful afternoon of activities to celebrate Education and Science Weeks.

Staff Learning

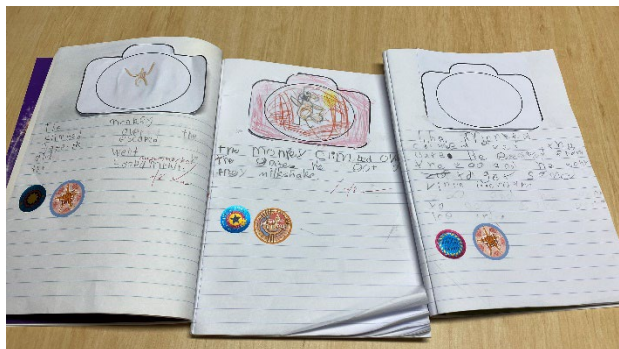
Our staff continue to participate in professional learning to ensure we are meeting the needs of our students. Wednesday afternoon staff began a learning journey with NSW DoE staff to enhance our understanding of human behaviour. In its simplest terms, behaviour is communication. As we work with young people, we are learning to understand what different behaviours might be telling us. The professional learning will continue later in the term.

Education Week & Science Week

This year the Education Week theme is "Creating Futures", something we work with students and families to do every day. The Science Week theme is "Glass: More than meets the eye". As they are close together, we held a fun afternoon for students on Thursday to combine the 2 events. A wonderful selection of little projects for Science Week were arranged by staff, allowing students to complete hands on activities and get involved in all things science! Thanks to Mrs Taylor for the organisation of this great afternoon!

Class KF

KF students showing off their descriptive writing about monkeys – I didn't know monkeys ate ice-cream or drank milkshakes, did you?!



Kind Regards,
Stacie Luppi

Important Dates

Term 3 - 2022

Week 4

Years 3 & 4
Netball School Cup
Ballina Netball Courts
Monday 8th August

Week 6

Byron Bay Writer's Festival
Tuesday 23rd August

Book Week
Character Parade
Wednesday 24th August
10:00-11:15am
School Hall

Week 9

Stage 3
Dorroughby Camp

Year 5
13th & 14th September

Year 6
15th & 16th September

Week 10

Last Day of Term
Friday 23rd September

Join us at

Ballina Public School

for

Kindergarten 2023

Orientation



6 orientation days to learn all about "big school"

sporting,
dance &
cultural
opportunities

Thursday & Friday
- 20th & 21st October
- 27th & 28th October
- 3rd & 4th November

buddy program
to support
your child at
'big' school

small
class
sizes

every child is
supported to succeed

diverse
&
inclusive



Contact our office
on 6686 2205
to secure your place
in our wonderful
orientation program!



Canteen

WEEKLY MEAL DEAL

Ham & Cheese Toastie
Up & Go
Nibble Mix
(contains pretzels, popcorn & cereal – nut free)
Prize

\$6.00

Please note when ordering this is the only meal deal available, we are unable to substitute for other items on the menu.

P & C Father's Day Stall & Raffle

Our P&C Father's Day Stall will be held on Monday 29th August between 9:15-11:15am.

Gift price ranges between \$2-\$10 (cash only).

Father's Day Raffle tickets are available for purchase from the Canteen on Wednesday , Thursday and Friday. Tickets are 50c each or 3 for \$1.00.



Book Parade – Wednesday 24th August, 2022



Our Book Parade will be held on Wednesday 24th August from 10:00am to 11:15am (lunch time) in the Hall. All welcome.

Parking around our school

Dear Parents and Caregivers

I wish to draw your attention to parking around the school during drop off and pick up times.

As you are aware, Crane Street and Martin Street are very busy at these times of day, and getting a parking spot is difficult. We appreciate your desire to get a spot as close to the school as possible, however, there have been cases of illegal and dangerous parking.

I would like to draw your attention to the "Safe Parking in School Zones" information provided by Ballina Shire Council. This outlines the dos and don'ts for safe parking near schools and is attached to this letter for your information.

I have been informed that some families are parking on the grass area near the Ballina Presbyterian Church next to our school and damaging the grounds. This has resulted in deep tyre tracks causing a person to trip and break their arm. Families are reminded that the parking lot beside the Church is private land. On behalf of the Church, we ask you not to park vehicles in this space during school drop off and pick up times. Your compliance with this request is respectfully acknowledged by the community.

Kind Regards,
Stacie Luppi
Principal

NO STOPPING



Fine exceeds \$349 and attracts a penalty of two demerit points.

What does it mean? You cannot stop in this area for any reason.

Why is it there? To keep sight lines clear for drivers and children so both have more time to avoid accidents.

Stopping on a continuous YELLOW LINE will also attract a \$272 fine.

A driver must not stop at the side of a road marked with a continuous yellow edge line.

It means the same as the No Stopping sign.



picking up your children after school – have a plan

Plan with your child how you will collect them:

- **When and where will you be after school?**
- **Where should your child wait?**

Ensure you are safely and legally parked before allowing children to get into your vehicle. Never allow a child to enter your vehicle while you are in traffic.

Your school may have some arrangements in place to help you collect your children.



no apologies, no excuses

When it comes to child safety, Ballina Shire Council makes no apologies for issuing infringement notices to drivers who break the law in and around school zones.

Illegal parking in school zones puts children at risk and endangers lives. Parking offences in school zones carry heavy fines and loss of demerit points.

If you experience a problem with illegal or dangerous parking at your school, contact

Ballina Shire Council

PO Box 450

Ballina NSW 2478

Phone 1300 864 444

Email council@ballina.nsw.gov.au



safe parking in school zones in ballina shire



your child is worth the extra time it takes



safe parking in school zones

As a community we need to ensure that children have safe passage to and from school. To improve road safety around schools, we need your assistance to understand the parking restrictions around schools and teach our children to be safe around traffic.

Always supervise a child and hold their hand when crossing the road.

Schools are areas where there is a lot of interaction between cars and pedestrians; including children. Children are small, hard to see, behave unpredictably and are extremely vulnerable. Their lack of road experience means it is difficult for them to judge dangerous situations.

Boys are twice as likely to be involved in child pedestrian casualties as girls and children aged 10 to 14 years have the highest rate of child pedestrian casualties (Roads and Maritime Services). You need to take extra care when driving and parking in and around school zones, even when you think there are no children around.

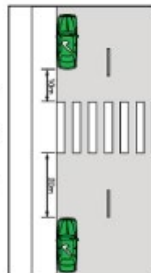
important road rules in school zones

PEDESTRIAN CROSSINGS

Fine exceeds \$464 and attracts a penalty of two demerit points.

What is the rule? You must not stop within 20 metres before a pedestrian crossing or 10 metres after a pedestrian crossing unless there is a control sign permitting parking.

Why? To ensure that pedestrians can have a clear view of approaching vehicles and drivers can see pedestrians who are about to cross the road.



INTERSECTIONS

Fine exceeds \$464 and attracts a penalty of two demerit points.

What is the rule? You must not stop within 10 metres of an intersection.

Why? To ensure that there is a clear view of children crossing the road at the intersection.

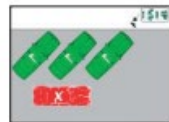
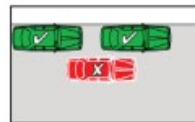


DOUBLE PARKING

Fine exceeds \$349 and attracts a penalty of two demerit points.

What is the rule? You may not stop on the road adjacent to another vehicle at any time even to drop off or pick up passengers.

Why? Double parking forces other cars to go around you causing traffic congestion and reduces the view of drivers and children crossing the road.



important signs around schools

BUS ZONE

Fine exceeds \$349 and attracts a penalty of two demerit points.



What does it mean? You must not stop or park in a bus zone unless you are driving a bus.

Why? To provide a safe place for large buses to set down and pick up passengers. Cars parking in bus zones put lives at risk by forcing buses out of "their" safety zone.

NO PARKING

Fine exceeds \$194 and attracts a penalty of two demerit points.



What does it mean? You can stop in a NO PARKING zone for a maximum of two minutes to drop off and pick up passengers. The driver must stay within three metres of the vehicle at all times.

Why? To provide a safe place for older children to be set down and picked up without endangering other children.

NO STOPPING ON PATH/NATURE STRIP

Fine exceeds \$349 and attracts a penalty of two demerit points.

What does this mean?

You cannot stop in this area for any reason.

Why? To keep sight lines clear for drivers and pedestrians.



Class K/1T

K1/T have been very busy looking at 2D shapes in Mathematics. We used shapes to create a collage. In Drama we used our bodies to create shapes, and in Visual Arts we designed and created a 'Kandinsky' style painting using 2D shapes. This was fun.



In Geography, we discussed things we know about our community and what kind of places were in it. We found out that we actually know a lot about Ballina and where things are. Our teacher printed out photos of places and we glued them on a map of Ballina. We are hoping to use our maps at the end of the term.





We also had 2 guest speakers in our class on Wednesday. Michael our GA and Trish our cleaner told us what their responsibilities are in the school. They are very important people in our school community and help keep it running.

Some student comments:

"We need to come to school so that we can learn stuff" **Nahlia**

"We need to pick up rubbish in our community so that dogs don't eat the rubbish" **Wyatt**

"Some places in our community keep us safe, our school, the doctors and the Police Station" **Lori**

"It's important to have shared places in our community so that we can all play together" **Chase**

"It's important to know where a place is, so you know which way to get there" **Mason**

"We need to keep the school and community safe and tidy because if we don't, people won't want to come to Ballina Public School and we would have an empty school" **Mia**

"We need to put away our rubbish because it can make our school community untidy" **Lola**



OUR MORNING WITH ELI COOK AND HIS YEAR 3/4 CLASS FROM BALLINA PUBLIC SCHOOL



'Literacy is the capacity, confidence and disposition to use language in all its forms. Literacy incorporates a range of modes of communication including music, movement, dance, storytelling, visual arts, media and drama, as well as talking, listening, viewing, reading and writing. media'. (EYLF)

During term 3 the children will be collaborating and engaging with the year 3/4 class from Ballina public school in a literacy and reading program. Literacy in early childhood can be thought of as speaking and listening and refers to the various formal and informal ways oral language is used to convey and receive meaning. Listening to other people speak enables children to develop vocabulary, comprehension, and language skills. These important communication skills are the building bricks of literacy and learning. Our aim and objectives throughout the implication of this program, is to provide all the children with the opportunity to:

- Make meaningful connections with each other through conversation.
- Build confidence in their social abilities.
- Practice their reading and listening skills.
- Find enjoyment in reading and listening to stories.

As a whole we were so proud of not only the respect, patience and confidence Eli's class showed the children during their engagement, but how receptive and involved our children were to the experience. We believe this project will continue to provide a rich range of learning opportunity for everyone involved.



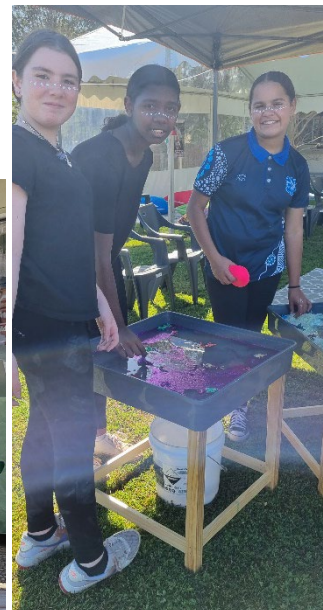
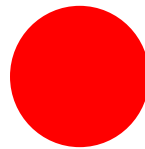
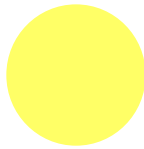
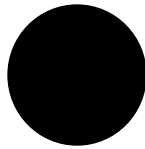
Science Day – Thursday 4th August 2022



Girls Aboriginal Dance Group

Our Stage 3 Aboriginal girls dance troupe was invited to Jarjum Bugal Nah for the National Aboriginal and Torres Strait Islander Children's Day. They were invited to help open the day performing a few dances after a Welcome to Country by Auntie Nancy Walker. Mr Cook then taught the preschoolers a dance and the girls helped show the moves. They then joined in activities with them before returning to school.

Thank you Jarjum Bugal Nah and Bunjum for inviting our students today and Mr Cook and Mrs Wheatland for taking us.



Goori Gumaguy Blaggang Mirr



Jarjum Gamgaang Bulaang

Learning Together

Homework Support Centre

YEARS: 1-6

Wednesday 4:00pm-5:30pm

Community Room

10 Hayman Street, West Ballina

Bring your homework and get support !

**Dates: 3rd August, 17th August, 31st August, 14th
September, 28th September**

For more Information contact Kath Brokeman 0402039554 or
Letisha Roberts 0435770326

Afternoon tea provided.

Follow covid 19 safe practises.



Jarjum Playgroup



When: Tuesday's

Commencing:

10:30am till 1:00pm

Where: POP up on Country

OR

10 Hayman Street, West Ballina 2478

(Lunch will be provided)

For more information contact: Letisha Roberts 0435770326 Kathy
Brokeman 0402093554 Teeann Parker 0435913624

If you do not have transport please call us before
the event to make arrangements as transport is
limited.

Covid 19 policies apply i.e Mask, sign in

